

Linher
HOLLINGSWORTH

JK kravet



kravetcouture





Linherr HOLLINGSWORTH®



Linherr Hollingsworth's innate sense of soulful beauty, keen inquisitiveness and years of experience in the industry has garnered her a notable reputation and a loyal following among clients and the design community at large. Known for her play of duality between the masculine and feminine in her work, Linherr's design sensibility encompasses a balance between strength and softness, where organic and handsome is infused with a sultry sophistication!



- 1. **GUILTY PLEASURE** Double shot latte every morning 2. **BAR** Cipriani in Venice 3. **GADGET** Microsoft Surface 4. **RESTAURANT** Maison Blanche in Paris 5. **BOOK** "A Shadow Falls" by Nick Brandt 6. **MOVIE** The Illusionist 7. **FASHION DESIGNER** Giorgio Armani 8. **CAR** 1967 Land Rover 110 Soft Top 9. **CHOCOLATE** Dark Chocolate 10. **CITY** Paris 11. **CHAIR** PP225 Flag Halyard, 1950 by Hans Wegner 12. **SEASON** Summer



#LHxkravet

Fabrics



Fresh architectural patterns and free-flowing forms colored in a richly organic palette are highlighted with touches of metallic accents throughout the collection. Abstract shapes and rhythmic combinations of texture and color harmoniously infuse unpretentious yet luxurious style.



Libella - Ivoire
34249-116



Shimerlino - Oyster
34248-1611



Secheylle - Oyster
34251-116



Cinquante Cinq - Pyrite
4219-11



Tremeti - Pyrite
34247-16



Girelles - Truffle
34252-316





Baturi Due - Truffle
Baturi Due-16



Sandtropez - Stone
Sandtropez-11



Parisio - Sand
34241-16



Les Antibes - Sand
34242-16



Get Squared - Dusk
34240-616



Mucci - Mink
Mucci-616

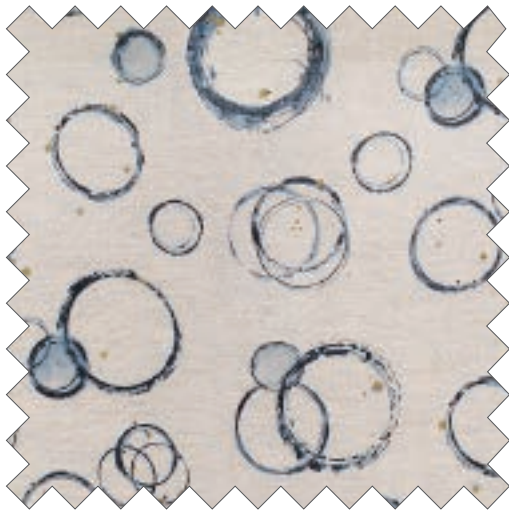




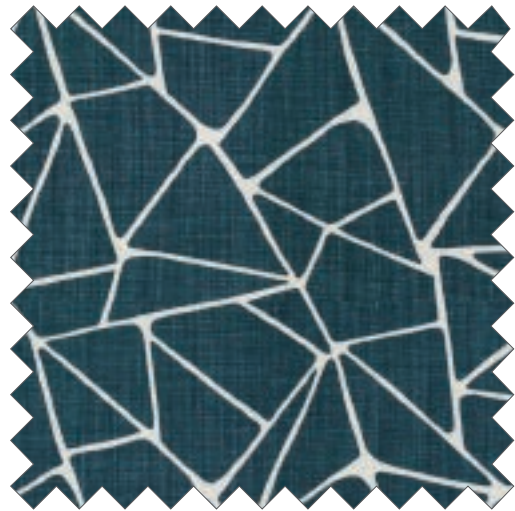
Toshali - Burnished
4221-411



Sterlina - Gilt
L-Sterlina-Gilt



Retouche - Teal
Retouche-516



To The Point - Teal
Tothepoint-35



Chicattah - Indigo
Chicattah-5



Baturi - Indigo
Baturi-516

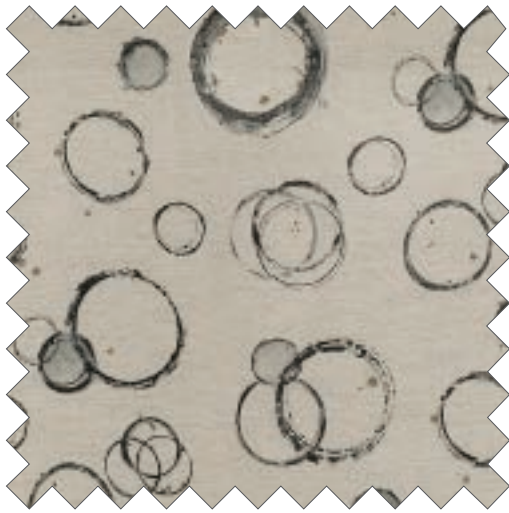




Bijoux - Mink
34257-21



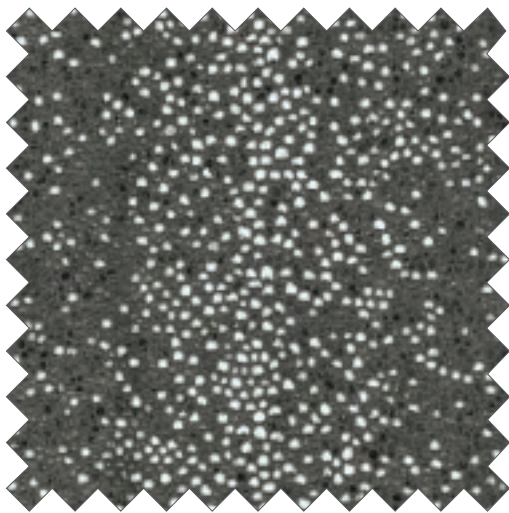
Zingaro - Mink
34253-11



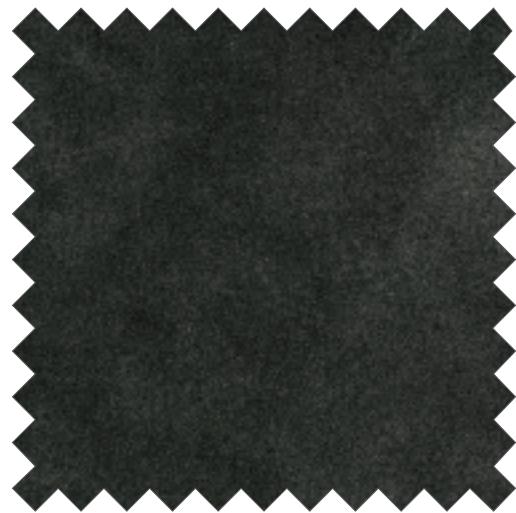
Retouche - Coal
Retouche-816



Modica - Coal
Modica-21



L'escale - Fig
34239-1610



Sterlina - Indigo
L-Sterlina-Indigo

Additional color ways available at kravet.com

Trimmings



Soulful beauty combines with casual eclecticism for the perfect rhythm of understated chic in Bohème by Linherr Hollingsworth trim collection. Designed to complement the fabric collection, Bohème's bold embroidered patterns, metallic silk screen prints, textured cottons and stone washed wooden bead designs are infused with personal style and layers of visual intrigue.



Luster Cord - Pyrite
T30748-11



Pebble Cord - Mink
T30753-106



Vintage Tape - Pyrite
T30747-11



Wonky Key - Lucite
T30751-11



Mosaique - Sand
T30752-167



Ramble Tape - Oyster
T30750-16



Vertical Tape - Melon
T30754-1124

Additional color ways available at kravet.com

Carpets



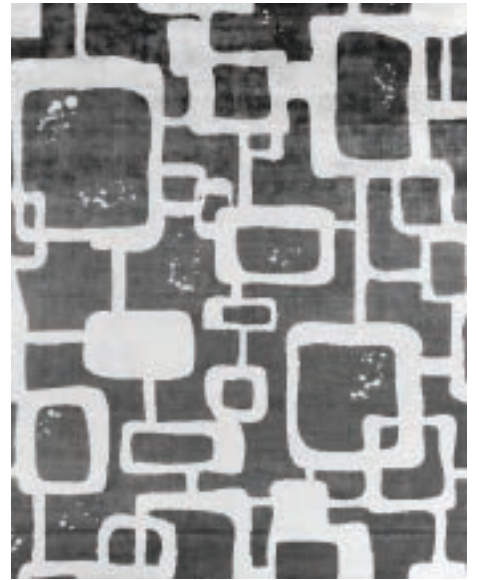
Linked Up, a bold, large-scale carpet design, is offered in five chic and organic colorways from bronze to indigo. First hand-loomed and then screen-printed by hand, the result is a striking and sophisticated area rug. Linked Up is just as eye-catching and luxurious underfoot as it is in a printed fabric counterpart, Get Squared.



Linked Up - Azure



Linked Up - Bronze



Linked Up - Graphite



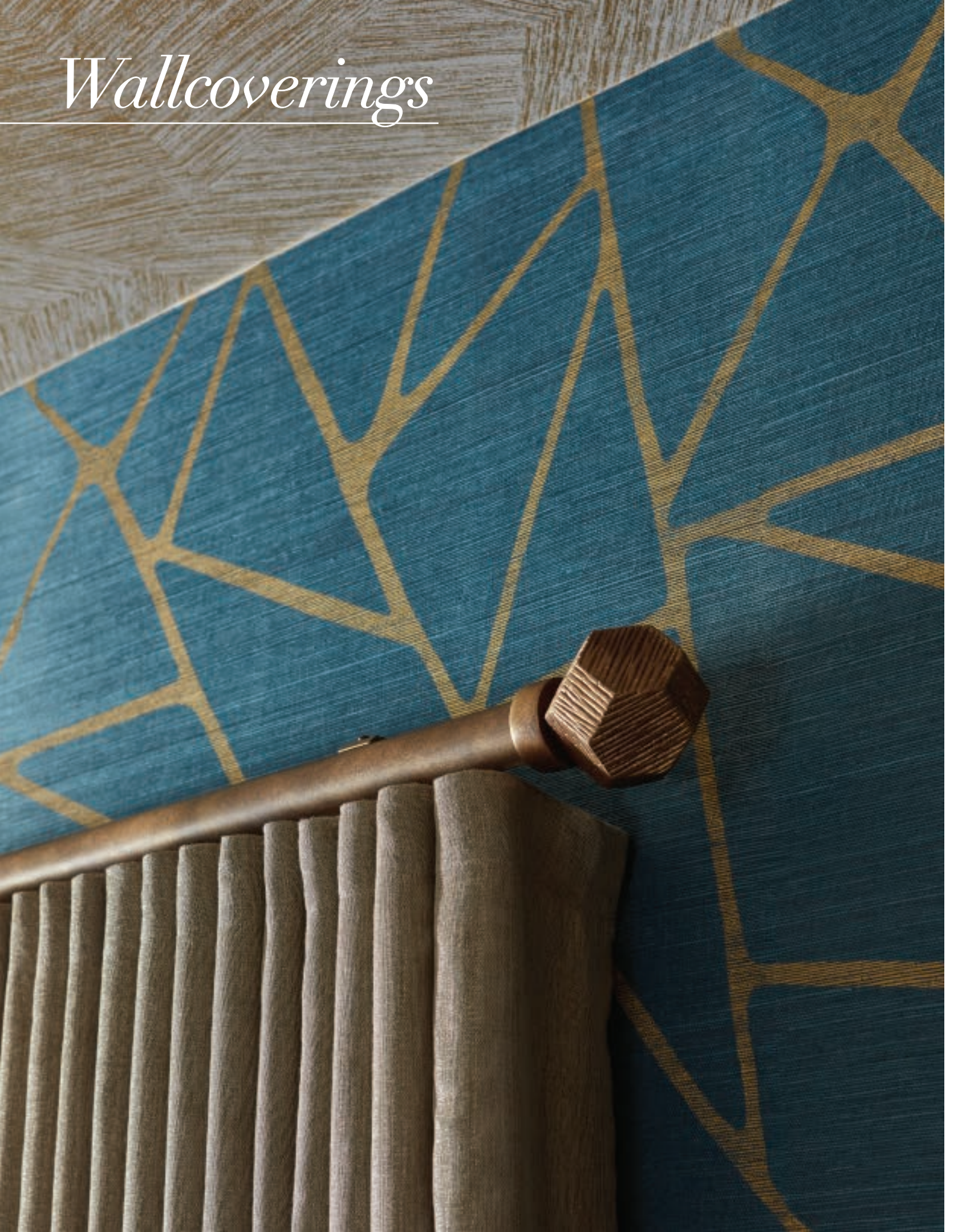
Linked Up - Indigo



Linked Up - Mink

Hand Loomed in India
100% Viscose
Available in 8x10, 9x12, 10x14

Wallcoverings



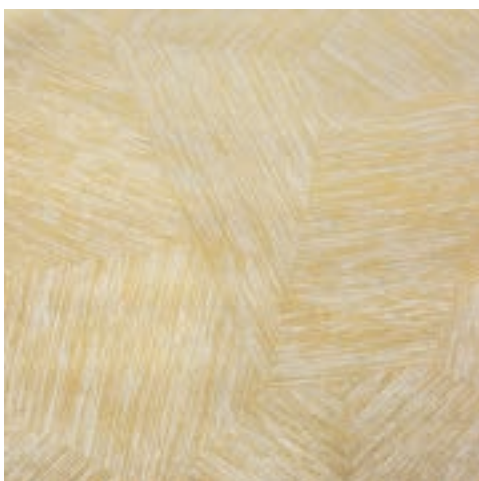
Edgy with sophisticated flair, Bohème by Linherr Hollingsworth showroom-exclusive wallcoverings complement the soulful beauty and rich textures in the collection with burnished metallics, deep charcoals, azure blues, and lush neutrals. The geometric and organic patterns are highlighted with hints of subdued metallics in grasscloths and raffias – a rhythmic celebration of Linherr’s signature style: refined eclecticism.



Arreaza - Ivoire
W3396-411



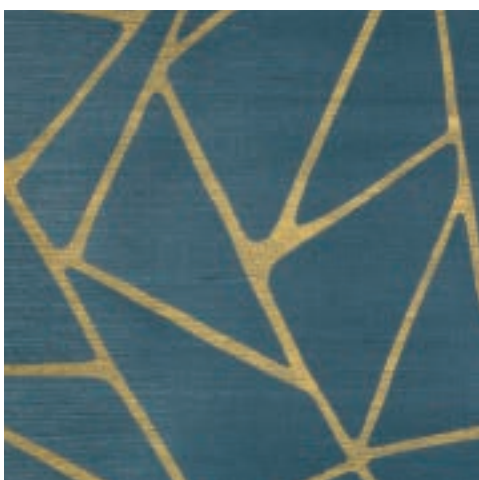
Beziers - Stone
W3401-411



Forellino - Gilt
W3403-4



La Pointe - Gilt
W3399-4



To The Point - Teal
W3400-435



Zebrato - Coal
W3402-811





Front Cover Wallpaper: W3400-435; Drapery Panels: 4222-106, Trim: T30747-46; Sullivan Side Table OTP101A; East Side Sofa DS2403-1, Fabric: 34247-16; Pillows (left to right on East Side Sofa): Front: Mucci-516, Trim: T30747-46, L-Sterlina-Indigo, Welt and Back: 34257-50; Tempest Chair FS550, Fabric: Chicattah-5; Carpet: Cubist in Mink 6082. **Page 2** Wallpaper: W3400-435; Drapery Panels: 4222-106, Trim: T30747-46; Karl Sofa DS3854-1L, Fabric: 34257-50, Pillows (left to right): Modica-4, Retouche-516, Trim: T30748-44; Carpet: Cubist in Mink 6082. **Page 4** Wallpaper: W3402-811; Lou Lou Slipper Chair WS101-CH, Fabric: Modica-21; Pillows (back to front): Chicattah-11, 34246-116, Trim: T30754-1011, 34239-1610, 4221-711, Trim: T30747-11, 34257-110, Trim: T30753-106, 34242-106, Sandtropez-11, Trim: T30750-16; Carpet: Curated Kravet Champagne Cowhide (QR-15753-Champagne). **Page 12** Trim top to bottom: T30753-118, T30753-106, T30754-106, T30747-46. **Page 14** Wallpaper: W3402-811; Lou Lou Slipper Chair WS101-CH, Fabric: Modica-4, Pillow: Modica-4; Bianca Tet-A-Tete DS3859-ET, Fabric: Retouche-816; Pillows (left to right): Modica-4, Retouche-816, Trim: T30753-818, Modica-21, Trim: T30753-818; Carpet: Linked Up-Graphite. **Page 16** Wallpapers: W3403-4, W3400-435; Drapery Hardware: HDW20516, HDW20518-64, HDW20532-64, HDW20506-64; Drapery Panels: 4222-106, Trim: T30747-46. **Page 18-19** Wallpaper: W3400-435; Drapery Panels: 4222-106, Trim: T30747-46; Sullivan Side Table OTP101A; East Side Sofa DS2403-1, Fabric: 34247-16; Pillows (left to right on East Side Sofa): Front: L-Sterlina-Indigo, Welt and Back: 34257-50, Mucci-516, Trim: T30747-46; Tempest Chair FS550, Fabric: Chicattah-5; Sofa (right): Karl Sofa DS384-1L, Fabric: 34257-50; Pillows (left to right on Karl Sofa): Retouche-516, Trim: T30748-44, Chicattah-5, 34248-1611, Trim: T30748-11; Carpet: Cubist in Mink 6082. **Back Cover** Wallpaper: W3402-811; Lou Lou Slipper Chair WS101-CH, Fabric: Modica-21, Pillow: Modica-4; Carpet: Linked Up-Graphite.

For the complete Linherr Hollingsworth collection, visit kravet.com

kravet® US 800 645 9068 CAN 800 535 3258 UK +44 (0) 1202 266 995 MX 01 (800) 777 1569 kravet.com CuratedKravet.com